



## Tiverton Way

**£579,000**

Cosway Estates are pleased to offer this bright two double bedroom house, situated within the popular Lidbury Square development, offered in excellent condition throughout. The house offers a spacious reception area with French doors leading out to a lovely garden. It has a modern fully fitted kitchen and a downstairs WC. Upstairs has 2 double bedrooms with fitted wardrobes and a modern bathroom. The house comes with an allocated parking space and backs on to green space. Located within a short distance to Mill Hill East Underground Station, Waitrose & Virgin Active. Chain free & Sole Agent.

### Viewing

Please contact our Mill Hill Office on 020 8959 0011 if you wish to arrange a viewing appointment for this property or require further information.



2



1



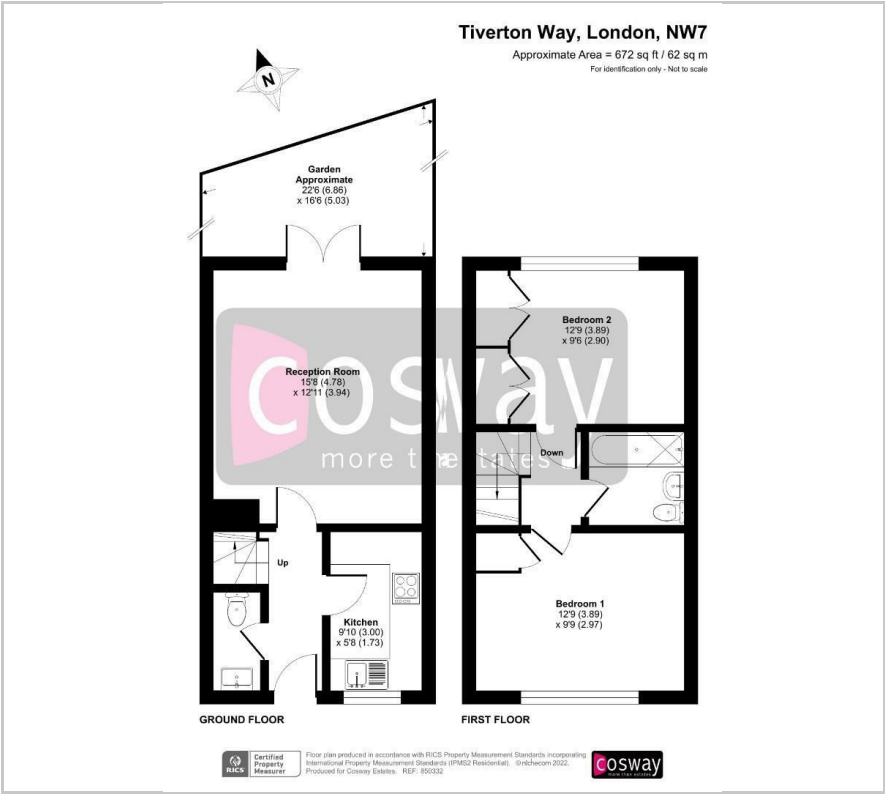
1



C



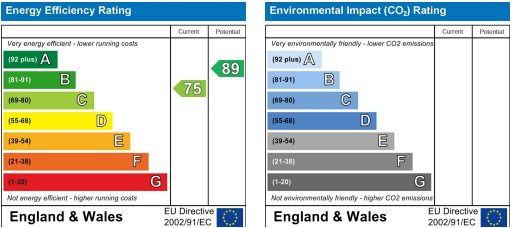
Floor Plan



Area Map



Energy Efficiency Graph



These particulars, whilst believed to be accurate are set out as a general outline only for guidance and do not constitute any part of an offer or contract. Intending purchasers should not rely on them as statements of representation of fact, but must satisfy themselves by inspection or otherwise as to their accuracy. No person in this firms employment has the authority to make or give any representation or warranty in respect of the property.